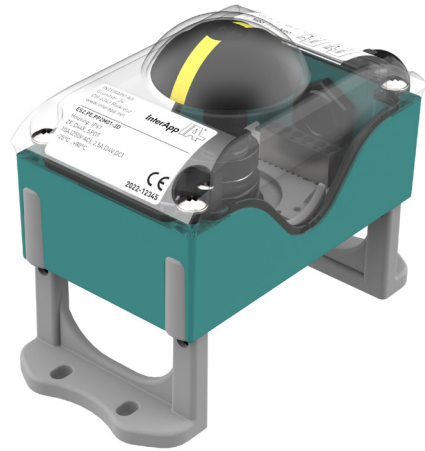


Description

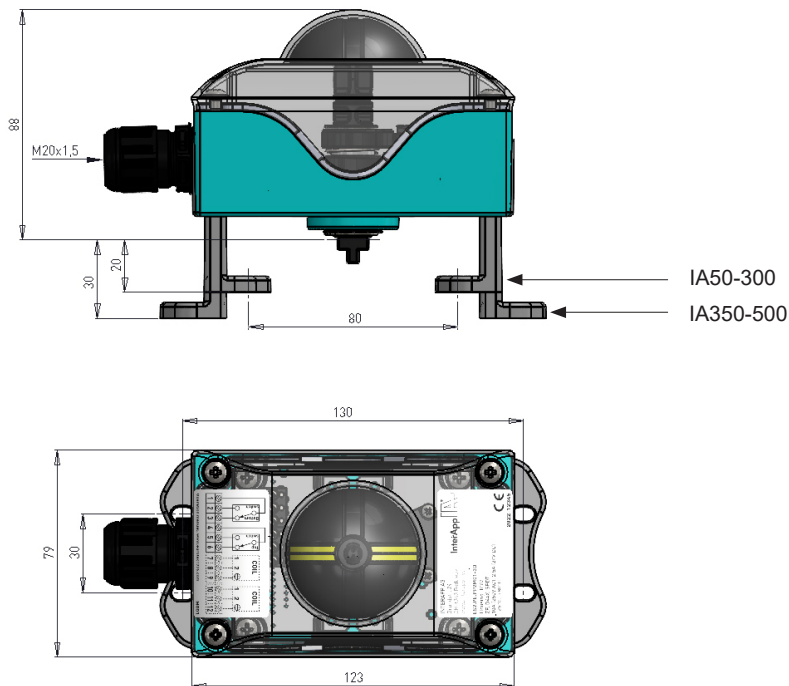
The plastic limit switch box is for direct mounting on pneumatic actuators. The mounting brackets are according to NAMUR (VDI/VDE3845), for holes distance 80x30mm and 130x30mm and standard NAMUR shaft heights of 20 and 30mm.

Product features

- Housing PA6 + PC (UV resistant, self extinguishing rate V0)
- Bracket PA6 with 30%GF%
- Shaft material PA6
- Limit switches 1x ON, 1x OFF
- Cam with 2 independent adjustable cams
- Cable gland M20 x 1,5



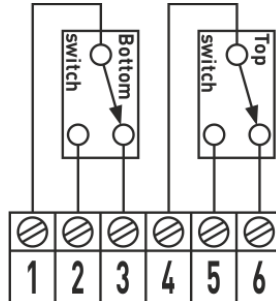
Dimensions



Configuration

ES2.PE.PP2M01-3D

Box with mechanical microswitches.
 SPDT. NO/NC. Silver contacts.
 Voltage: 12 - 250 V AC/DC
 Operating current max. AC: 250 V, 10 A /
 DC: 24 V, 2,5 A
 Operating current min. AC: 250 V, 0,1 A /
 DC: 24 V, 0,1 A
 IP67, T = -25 °C80°C

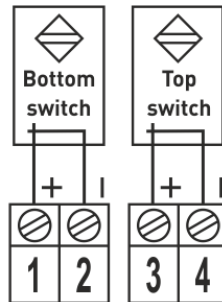


ES2.PE.PP2M01-G-3D

Box with mechanical microswitches.
 SPDT. NO/NC.
 With gold contacts.
 Voltage: 5 - 250 V AC/DC
 Operating current max. AC: 250 V, 0,1 A /
 DC: 24 V, 0,1 A
 Operating current min. AC: 250 V, 0,01 A /
 DC: 24 V, 0,01 A
 IP67, T = -25 °C80°C

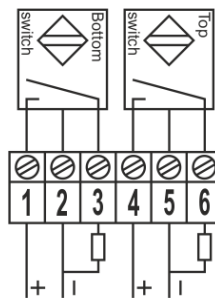
ES2.PE.VP2I01-IA-3D

Box with inductive proximity switches.
 2-wire.
 II 2G Ex ia IIC/IIB T6/T4 Gb
 II 2D Ex ia IIC T80 °C / T110 °C Db
 NAMUR P+F NJ2 V3 N.
 Nominal voltage: 8,2 V DC
 Current consumption ≤ 1 mA - actuated /
 ≥ 3 mA - non-actuated
 IP67, T = -25 °C ... +70 °C (T4: +80 °C)



ES2.PE.PP2I01-3D

Box with inductive proximity switches.
 3-wire. PNP P+F NBB2-V3-E2
 Nominal voltage: 10 - 30 VDC
 Operating current: 0 - 100 mA
 IP67, T = -25 °C ... +70 °C

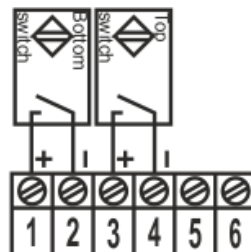


ES2.PE.PP2I01-WA2

With flat indicator and shaft in stainless steel.

ES2.PE.PP2I01-19-3D

Box with inductive proximity switches.
 2-wire. IFM IS 5026.
 Nominal voltage: 5 - 36 VDC
 Operating current: 4 - 200 mA
 IP67, T = -25 °C ... +80 °C



Normally open